



# RDL®

High Performance Audio Products. Made in America.

## Model D SERIES-RN2ML Wall-Mounted Bi-Directional Mic/Line Dante Interface 2 x 2



- Single-Gang Dante or AES67 Network Interface for Two Audio Inputs and Two Audio Outputs
- One Balanced XLR Mic-Level or Line-Level Input
- One Line-Level Summed-to-Mono Mini-jack Input
- Two Balanced Rear-Panel Outputs on Detachable Wiring Block
- Software-Selected XLR Input Gain; Mic: 35 dB, 42 dB or 59 dB; Line: Unity or 12 dB
- P48 Mic Phantom Selected by Software
- Software-Selected Mini-jack Input Gain: Unity, +5 dB / -5 dB
- Outputs Equipped with Software-Controlled Attenuator in 1 dB Steps
- Module is Configured and Adjusted Using RDL CONSOLE or Other Network Control Software
- Compatible with RDL Network Remote Controls
- High Resolution 24 Bit Analog to Digital and Digital to Analog Conversion
- Legendary RDL Studio Quality, Low-Noise Performance

**APPLICATION:** The D-RN2ML is a complete wall-mounted Dante or AES67 audio network interface. It features one XLR mic or line input on the front panel, one stereo Mini-jack line-level input summed to mono on the front panel and two balanced line outputs on a rear-panel detachable wiring block. The module is configured and adjusted using RDL CONSOLE or other network control software. The D-RN2ML fits a standard US single-gang electrical box or an RDL WB-1U back box for installations in European or similar thinner walls. The D-RN2ML is PoE powered and is available in multiple finishes with optional customized graphics.

### Mic/Line to Network Section

The XLR input is converted to a Dante network transmit channel. Five gain settings are software-selectable for the XLR input. Three gain settings are provided to match condenser or dynamic microphones. Two gain settings are provided to match standard line levels. P48 phantom voltage may be software enabled when the XLR input is set for mic level.

### Line Input(s) to Network Section

The Mini-jack input is converted to one Dante network transmit channel. The left and right Mini-jack inputs are actively summed. Three software-controlled gain settings are provided to increase or decrease the gain by 5 dB from the normal gain setting, optimized for an input level of -10 dBV.

### Network to Line Outputs Section

Two Dante audio channels are converted to balanced line level, feeding a rear-panel detachable wiring block. Each output provides balanced +4 dBu for a network digital audio level of -18 dBFS. Each output is equipped with a software-controlled attenuator adjustable in 1 dB steps to a maximum attenuation of 63 dB, then OFF. The outputs may drive local power amplifiers or may feed additional XLR jacks mounted adjacent to the D-RN2ML in a dual-gang box. Two XLR mic or line outputs may be provided using an RDL D-D2 equipped with two AMS-XLRMA jacks, available separately.

Valid PoE power and synchronization to the Dante network are indicated by green LEDs visible from the front of the unit.

The D-RN2ML is a professional grade product with an RDL mic preamplifier for studio quality fidelity and low noise performance, with audio coupled through XLR and Mini-jacks housed in a steel chassis with a powder-coated or stainless-steel Decora front plate.

The D-RN2ML's superior performance specifications make it ideally suited to installations requiring network control and exceptional value in commercial networked audio systems. This full-featured product is engineered and manufactured in the U.S.A. for continuous duty in demanding installations. Designed to outperform. Built to last.

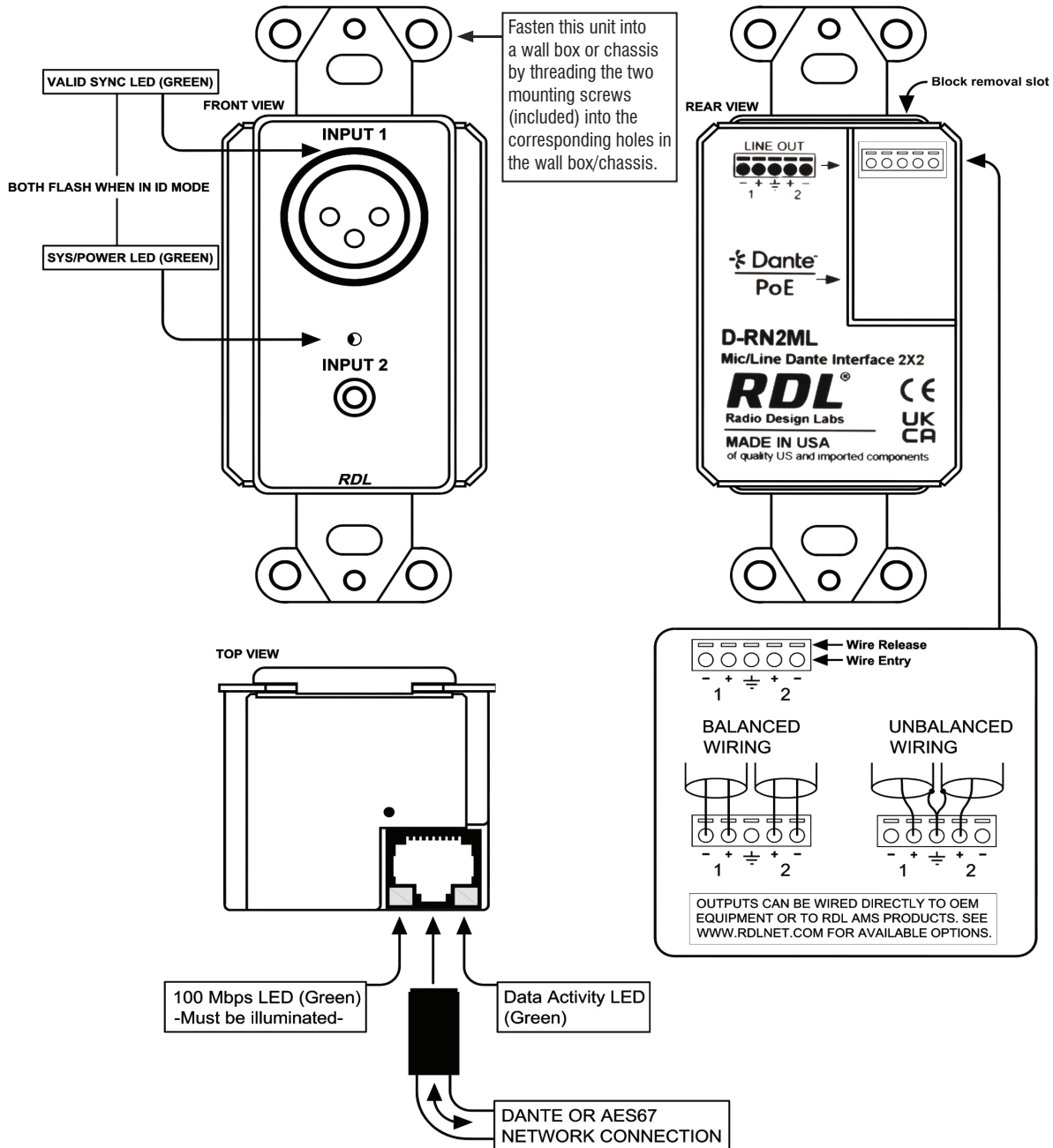


# RDL<sup>®</sup>

High Performance Audio Products. Made in America.

## Model D SERIES-RN2ML Wall-Mounted Bi-Directional Mic/Line Dante Interface 2 x 2

This product is not specified to provide basic insulation from network cabling not installed wholly within the same building structure or terminated on equipment earthed to a different earthing network.



This product is not specified to provide basic insulation from network cabling not installed wholly within the same building structure or terminated on equipment earthed to a different earthing network.



# RDDL®

High Performance Audio Products. Made in America.

## Model D SERIES-RN2ML Wall-Mounted Bi-Directional Mic/Line Dante Interface 2 x 2

## Installation/Operation

**CE** Declaration of Conformity available from [rdlnet.com](http://rdlnet.com).  
Sole EMC specifications provided on product package.  
Specifications are subject to change without notice.

### TYPICAL PERFORMANCE

Network Connector: RJ45 with Link and Speed indicators  
 Digital Audio Ethernet Protocol: Dante or AES67  
 Transmission Rate: 100 Mbps  
 Sample Rates Supported: 44.1 kHz, 48 kHz (default), 88.2 kHz, 96 kHz  
 Bit Depth Supported: 24 bits  
 Audio Operating Level: -18 dBFS = +4 dBu  
 Reference Level: 0 dBFS = +22 dBu

Mic/Line Input to Network Section  
 Input: XLR (female)  
 Gain: Mic: 35 dB (LOW), 42 dB (MED), 59 dB (HIGH); Line: Unity (NORM), 12 dB (HIGH)  
 Input Level (for +4 dBu/-18 dBFS): Mic: -31 dBu (LOW), -38 dBu (MED), -55 dBu (HIGH); Line: +4 dBu (LOW), -8 dBu (HIGH)  
 Input Level (maximum): Mic: -14 dBu (LOW), -21 dBu (MED), -38 dBu (HIGH); Line: +23 dBu (LOW), +10 dBu (HIGH)  
 Input Impedance: > 1.2 kΩ  
 Phantom Power: P48, software-selectable  
 Standard for Phantom: IEC 61938: 2013  
 Selectors per input (2): Phantom, Gain, software-selectable  
 Frequency Response: 20 Hz to 20 kHz (± 0.5 dB)  
 Equivalent Input Noise: < -128 dBu (59 dB gain); < -130 dBu A-Weighted  
 Noise below -18 dBFS (20 to 20 kHz): Mic: < -88 dB (LOW), < -82 dB (MED), < -68 dB (HIGH); Line: -88 dB (NORM), < -88 dB (HIGH)  
 THD+N: < 0.1% (20 Hz to 20 kHz, +4 dBu/-18 dBFS)  
 CMRR: > 65 dB (50 Hz to 120 Hz)  
 Crosstalk: Below Noise Floor (20 Hz to 20 kHz at operating level, input to input, max. gain)

Line Input to Network Section  
 Input: Mini-jack, Stereo input summed to mono  
 Gain: Unity (NORM), -5 dB (LOW), 5 dB (HIGH)  
 Input Level (for +4 dBu/-18 dBFS): L and R inputs driven: -10 dBV (NORM), -15 dBV (LOW), -5 dBV (HIGH); L input driven: -8 dBV (HIGH)

Frequency Response: 20 Hz to 20 kHz (± 0.35 dB)  
 Noise below -18 dBFS (20 to 20 kHz): -84 dB (NORM), -86 dB (LOW), -79 dB (HIGH)  
 THD+N: < 0.1% (20 Hz to 20 kHz, +4 dBu/-18 dBFS)

### Network to Line Outputs Section

Outputs (2): Balanced, detachable wiring block  
 Output Level (operating): +4 dBu (nominal) balanced  
 Output Level (maximum): +22 dBu balanced  
 Output Attenuator: Software-controlled, 0 to -63 dB and OFF (analog output per received network channel)  
 Output Impedance: 150 Ω balanced  
 Frequency Response: 20 Hz to 20 kHz (± 0.5 dB)  
 THD+N: < 0.1%  
 THD: < 0.01% (1 kHz)  
 Noise: < -80 dB (below +4 dBu); < -100 dB (below +22 dBu)  
 Crosstalk: Below Noise Floor (20 Hz to 20 kHz at operating level, output to output) > 18 dB  
 Headroom above -10 dBV:  
 Indicators (4): Ethernet Link and Speed (2, rear panel); Sync and Power (2, front panel)  
 Ambient Operating Environment: 0° C to 50° C  
 Power Requirement: PoE Class 0, IEEE 802.3af  
 Specification Conditions: Gain/Level: ± 1 dB; Source termination: 150 Ω; A to D values measured in digital domain  
 Dimensions: 1.80" (4.57 cm) W; 4.11" (10.44 cm) H; 2.09" (5.31 cm) D  
 Package Type: Cardboard Box  
 Package Dimensions: 2.75" (6.99 cm) x 6.7" (17.02 cm) x 6.25" (15.88 cm)  
 Shipping Weight: 0.71 lbs. (0.32 kg)  
 WEEE weight: 0.45 lbs. (0.2 kg)

Safety Instructions/Consignes de sécurité/  
Instrucciones de seguridad/Sicherheitshinweise:



EU Importer:  
 Importateur de l'UE:  
 Importador de la UE:  
 EU-Importeur:  
 RDL Europe B.V.  
 Joan Muyskenweg 124  
 1114 AN Amsterdam